



AAI-FD4

2004-2010 Ford / Lincoln / Mercury "CAN-BUS" Auxiliary Input Adapter

Installation Instructions

Vehicle Applications

FORD	
Edge	2007-2010
Expedition	2007-2009
Explorer	2006-2009
F-150	2004-2008
F-250	2005-2009
F-350	2005-2009
F-550	2005-2009
Focus	2005-2007
Freestyle	2005-2007
Fusion	2006-2009
Mustang	2005-2009
Sport Trac	2007-2009

LINCOLN	
Mark LT	2006-2008
MKX	2007-2009
Navigator	2007-2009
Zephyr	2006

Mercury	
Milan	2006-2009
Mountaineer	2006-2009

Not compatible if vehicle is equipped with OEM Rear Seat Entertainment (RSE) system, navigation, factory satellite radio or Ford Sync system.

Before You Start

Before any connections are made, PAC strongly recommends that all circuits be verified with a voltmeter before interfacing with them. Always set the parking brake before working on any vehicle.

General Overview

The AAI-FD4 converts the Rear Seat Entertainment port of specified OEM Ford / Lincoln / Mercury "CAN-BUS" radios to RCA level audio input. The AAI-FD4 features built-in audio adjustment circuitry with a 0 to +20 dB input sensitivity range of 0.475 to 4.75 volts (peak to peak) allowing the installer to match the audio level of the AUX device to the audio level of the AM, FM, or CD modes of the factory radio.

Install It Right with AAI-FD4

DO NOT force connectors together as pin damage may occur. This installation will be flawless if you take your time making the connections described below. Following the installation sequence below is critical to ensure proper recognition of the auxiliary device by the factory radio.

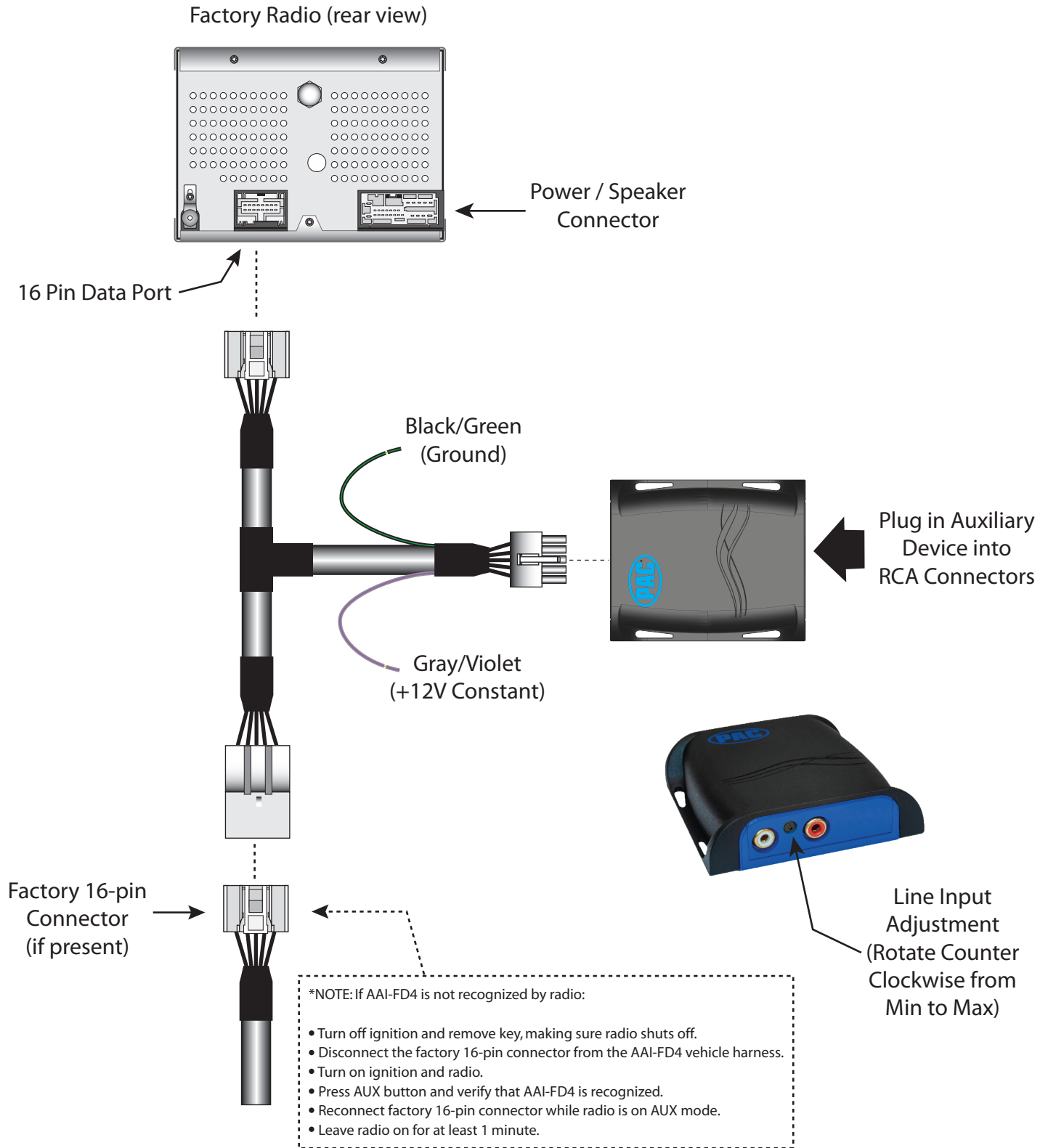
Installation Instructions

1. Disconnect the negative battery terminal.
2. Remove the Ford radio to gain access to the connectors on the back of the radio.
3. Remove any connector that may be in the 16-pin DATA port.
4. Plug the 16-pin connector of the AAI-FD4 into the 16-pin DATA port of the Ford radio.
5. Reconnect the factory 16-pin DATA cable (if present) into the mating socket on the AAI-FD4. *(see note on back)
6. Connect BLACK/GREEN wire of AAI-FD4 to ground (vehicle chassis).
7. Connect GRAY/VIOLET wire of the AAI-FD4 to a constant +12 volt source.
8. Connect appropriate length patch cord (not included) between the AAI-FD4 and auxiliary device.
9. Rotate the "Input Sensitivity" adjustment pot of the AAI-FD4 to its full clockwise position (minimum level).
10. Re-install factory radio.
11. Reconnect the negative battery terminal.

Verify Operations

1. With radio on, activate auxiliary device.
2. Set volume on auxiliary device to preferred listening level.
3. Push the "AUX" button on radio to gain access to auxiliary audio input.
4. Display on radio will show "DVD/CD" for a few seconds, then will display "PAC HI-FI".
5. Verify that audio of auxiliary device is heard.
6. Rotate the "Input Sensitivity" adjustment pot of the AAI-FD4 counter-clockwise until volume level of auxiliary device matches that of AM, FM, or CD modes.

Installation Diagram



Pacific Accessory Corporation
 Santa Ana, CA 92705

techsupport@pac-audio.com • www.pac-audio.com

Copyright 2013 Pacific Accessory Corporation. Content subject to change without notice.